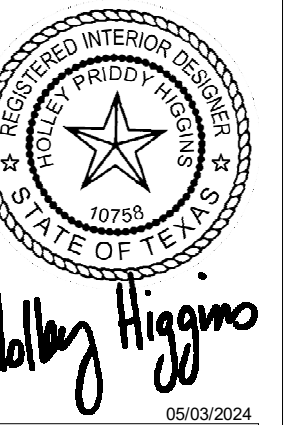


REVISIONS:
 15/24 ISSUED FOR PERMIT



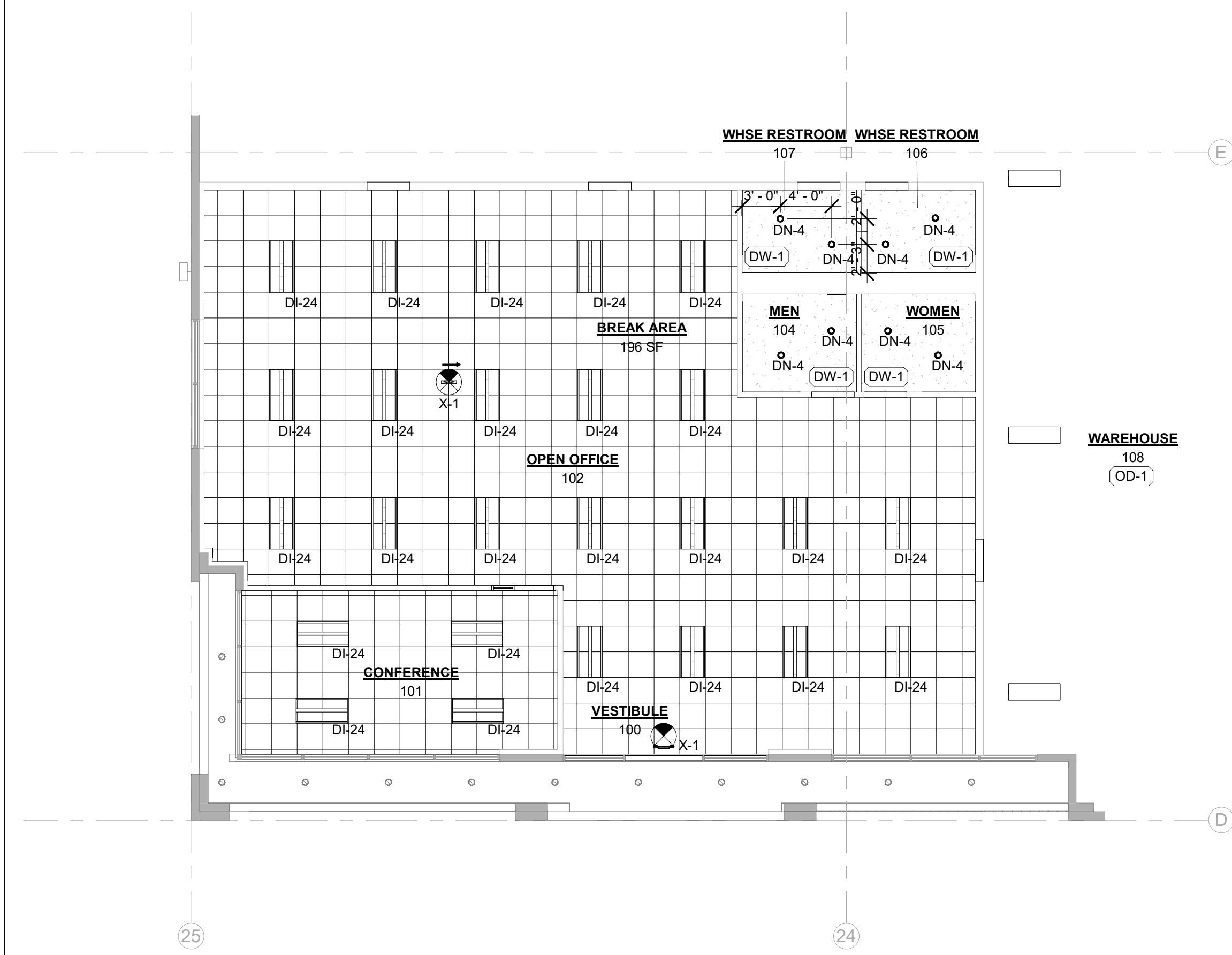
METHOD ARCHITECTURE, LLC
 THESE DRAWINGS ARE THE PROPERTY OF METHOD ARCHITECTURE, LLC AND MAY NOT BE REPRODUCED, COPIED, OR TRANSMITTED IN ANY FORM OR BY ANY MEANS, ELECTRONIC OR MECHANICAL, WITHOUT THE EXPRESS WRITTEN PERMISSION OF METHOD ARCHITECTURE, LLC.

TOEPPERWEIN INDUSTRIAL
 BUILDING 2- SPEC SUITE 201

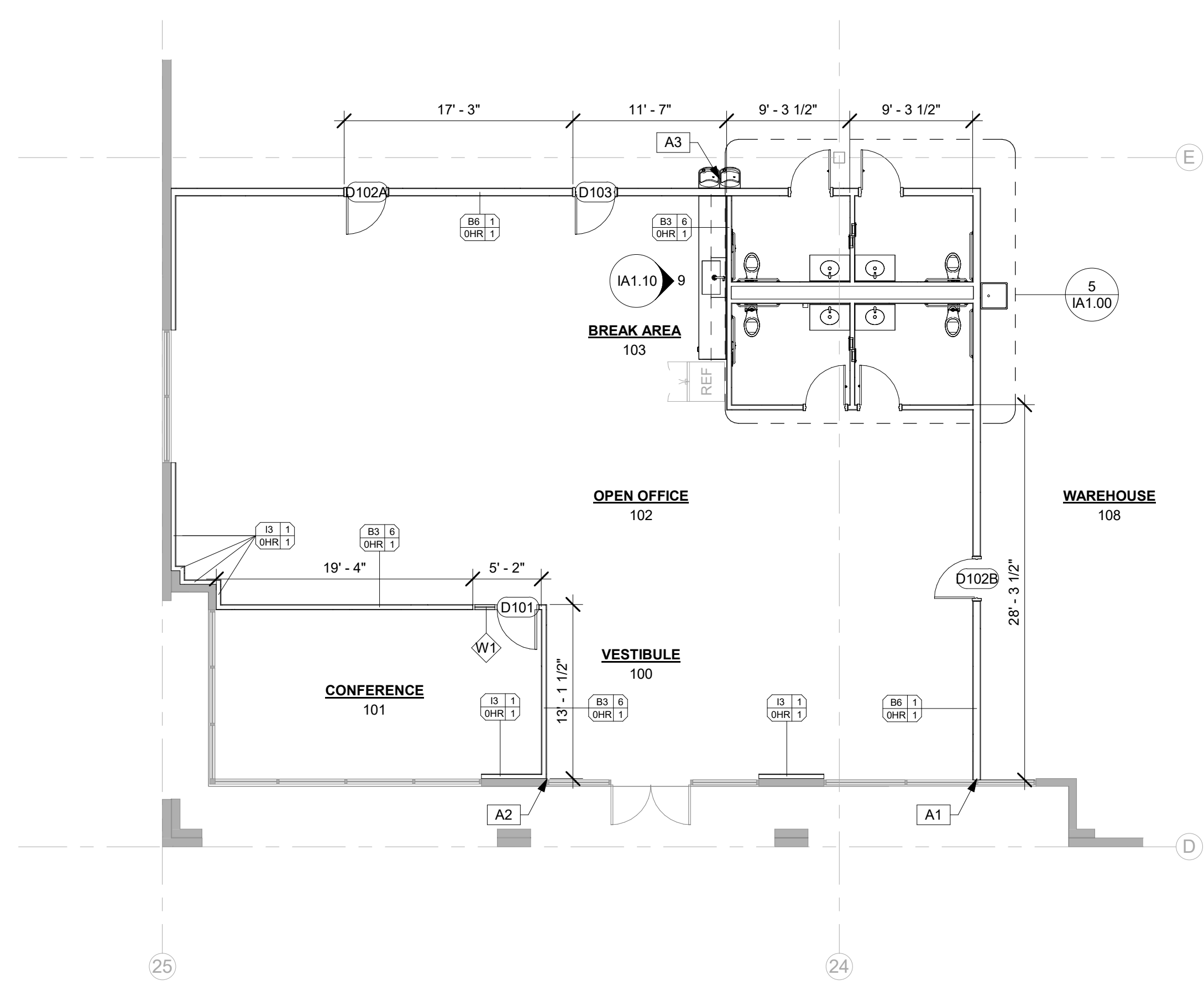
13552 TOEPPERWEIN RD.
 LIVE OAK, TX 78253

PROJECT:
 M24-04-T0004

SHEET:
A2.40
 ENLARGED PLANS



ENLARGED REFLECTED CEILING PLAN
 1/8" = 1'-0" 13



ENLARGED FLOOR PLAN
 1/8" = 1'-0" 5

KEYNOTES

DISCLAIMER: KEYNOTES MAY NOT BE SEQUENTIAL

#	NOTE
A1	ALIGN EDGE OF WALL TO EDGE OF MULLION.
A2	ALIGN EDGE OF WALL TO EDGE OF EXISTING CONSTRUCTION.
A3	PROVIDE ADA COMPLIANT BI-LEVEL DRINKING FOUNTAIN WITH APRON, ELKAY EZTL8C OR APPROVED ALTERNATIVE.

LIGHTING FIXTURE SCHEDULE

GENERAL NOTE: REFER TO MEP DRAWINGS FOR EMERGENCY FIXTURE LOCATIONS AND MODEL NUMBERS.

MARK	DESCRIPTION	FINISH	MOUNTING
DI-24	2x4 - DIR/IND	-	LAY-IN
DN-4	4" REC. DOWN.	-	LAY-IN
HB-1	HIGH BAY	-	DECK
X-1	EXIT SIGN	GREEN	CEILING

MATERIAL SCHEDULE - CEILING

MARK	DESCRIPTION	COMMENTS
ACT-1	ACOUSTICAL CEILING TILE	12'-0" AFF. U.N.O.
DW-1	DRYWALL CEILING	12'-0" AFF. U.N.O. PAINT PT-1, UON.
OD-1	OPEN TO DECK	RAW AND UNFINISHED

MATERIALS THROUGHOUT

MARK	DESCRIPTION	COMMENTS
ACT-1	ACOUSTICAL CEILING TILE	12'-0" AFF. U.N.O.

NOTES

- THESE MATERIALS SHOULD BE INSTALLED THROUGHOUT UNLESS NOTED OTHERWISE.
- REFERENCE INTERIOR MATERIAL SCHEDULE FOR EXACT SPECIFICATIONS OF EACH SELECTION.
- NO SUBSTITUTIONS ARE ALLOWED WITHOUT APPROVAL FROM BOTH OWNER AND ARCHITECT.