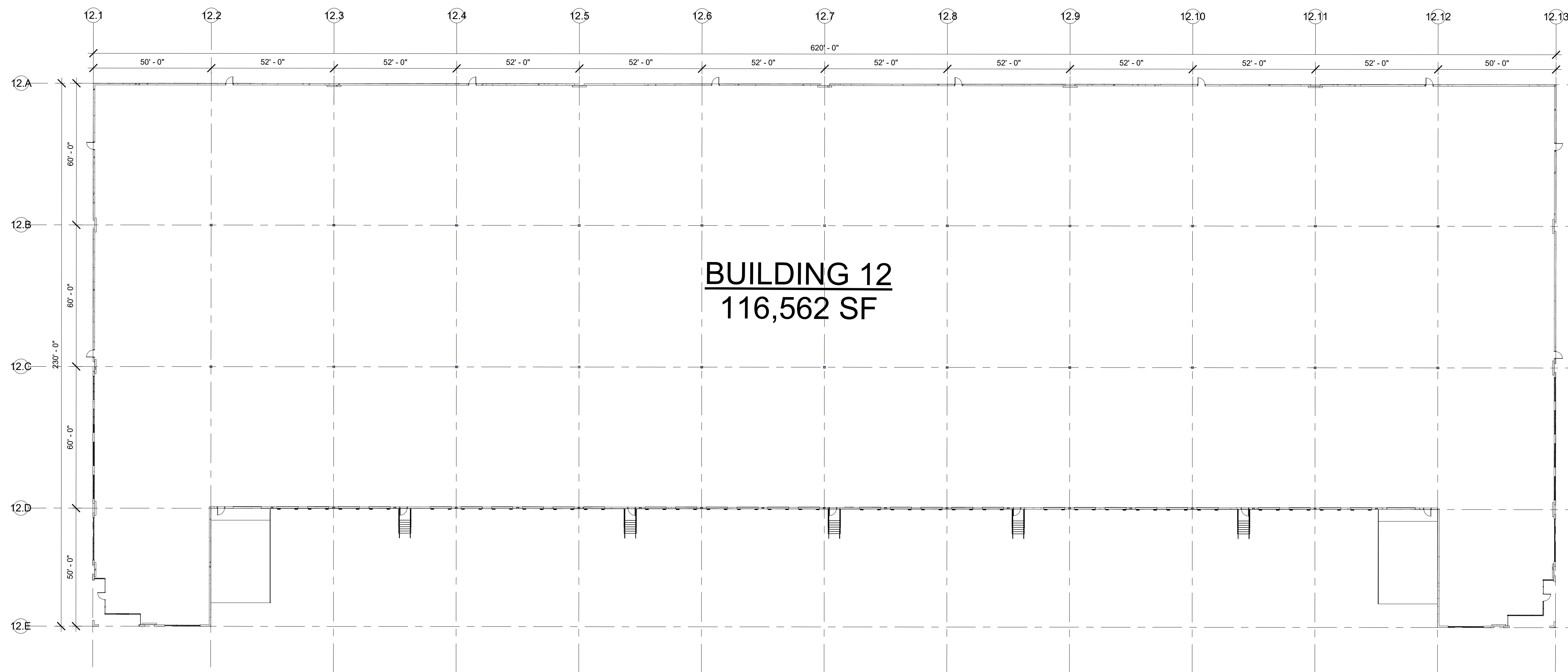


**EISENHAUER
BUSINESS PARK
BUILDING 12**
100% SPRINKLERED

TOTAL BUILDING: 116,562 SF

- PARKING:
86 SPACES
4 ADA
- OH DOORS:
9'X10': 31
12'X14': 2
- TRUCK COURTS:
SOUTH 130'-0"
- 32' CLEAR HEIGHT
- 49'6", 50', 52', 60' WIDE BAYS
- ESFR FIRE PROTECTION
- LED WALL PACKS



BUILDING 12
116,562 SF

ARCHITECTURAL FLOOR PLAN - BLDG 12

